

ADOT SCENIC ROADS PROGRAM



PARKWAYS, HISTORIC & SCENIC ROADS PROGRAM



Parkways

Historic Roads

Scenic Roads



PARKWAYS, HISTORIC & SCENIC ROADS PROGRAM

- Program part of state law since 1982 (ARS 41-512 -- ARS 41-518)
- Program administered by ADOT
- Parkways, Historic & Scenic Roads Advisory Committee (PHSRAC)



PHSRAC COMMITTEE

- 6 appointed by the Governor
 - Represent various counties
- 5 from state agencies
 - Arizona State Parks
 - Arizona Historical Society
 - Office of Tourism
 - Tourism Advisory Council
 - ADOT
- Review requests to establish or designate
 - Make recommendations to the State Board
 - Recommend continuation or deletion



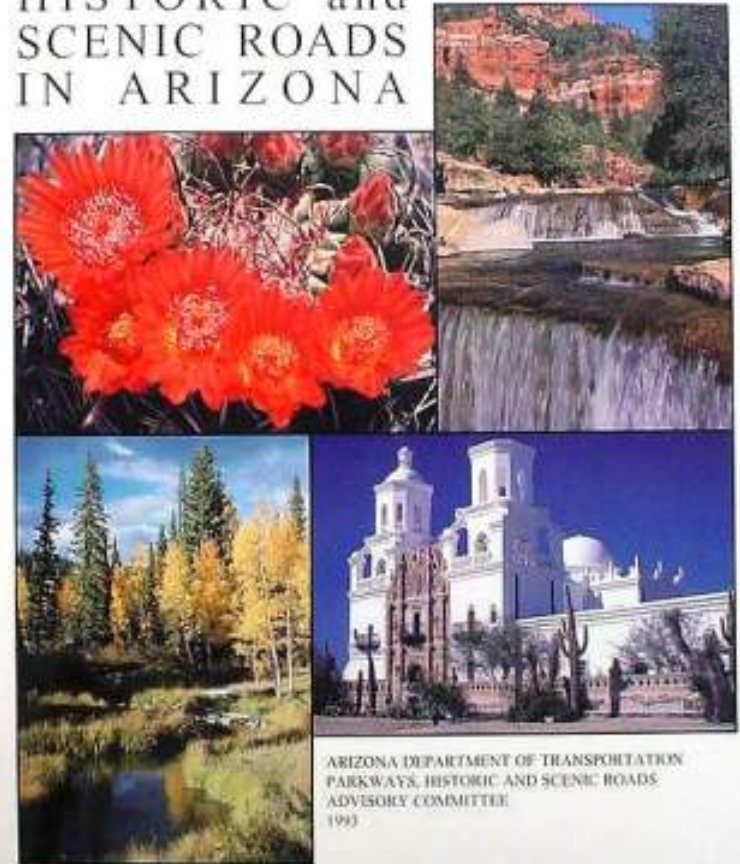
PROCEDURES FOR STATE DESIGNATION

For Parkways, Historic and Scenic Roads in Arizona

Steps include:

- Request, review, documentation, recommendation, implementation, establishment and maintenance review
- Rating process

APPLICATION PROCEDURES
for DESIGNATION of PARKWAYS
HISTORIC and
SCENIC ROADS
IN ARIZONA



PARKWAYS, HISTORIC & SCENIC ROADS

- 26 state-designated routes
- Must be uniquely scenic or historic
- Preserve & protect features and resources that define it's character, interest and appeal



QUALITIES FOR SCENIC DESIGNATION

- *Vividness*
Memorable visual impression
- *Intactness*
Extent landscape is free from visual encroachment
- *Unity*
Cohesive unique unified experience



QUALITIES FOR HISTORIC DESIGNATION

- *Impact of the Route*
Contribution to the cultural heritage of the area
- *Historical Contribution*
Significance of exploration, settlement &/or development of region
- *Proximity*
Consider both physical &/or visual access
- *Uniqueness*
Relative scarcity or abundance of a given type of historic resource



QUALITIES FOR PARKWAY DESIGNATION

- Meets both Scenic Road and Historic Road criteria
- Controlled access
 - One mile minimum distance
- Space available for:
 - Interpretive area
 - Parking & visitor facilities



NATIONAL SCENIC BYWAYS PROGRAM

- Began in 1991
- Administered by the Federal Highway Administration (FHWA)
- First designations – 1996



NATIONAL SCENIC BYWAYS INTRINSIC QUALITIES

Six categories:

- Archaeological
- Cultural
- Historic
- Natural
- Recreational
- Scenic

Must have “regional or national significance”



SIX INTRINSIC QUALITIES

- *Scenic*
Beauty, whether natural or human-made
- *Natural*
Minimal human disturbance of the natural ecological features
- *Historic*
Landscape, buildings, structures or other visual evidence of the past



SIX INTRINSIC QUALITIES

- *Cultural*
Visual evidence of the unique customs, traditions, folklore, or rituals of a currently existing human group
- *Archaeological*
Visual evidence of the unique customs, traditions, folklore, or rituals of a no-longer existing human group
- *Recreational*
The road corridor is used for recreation



NATIONAL DESIGNATION

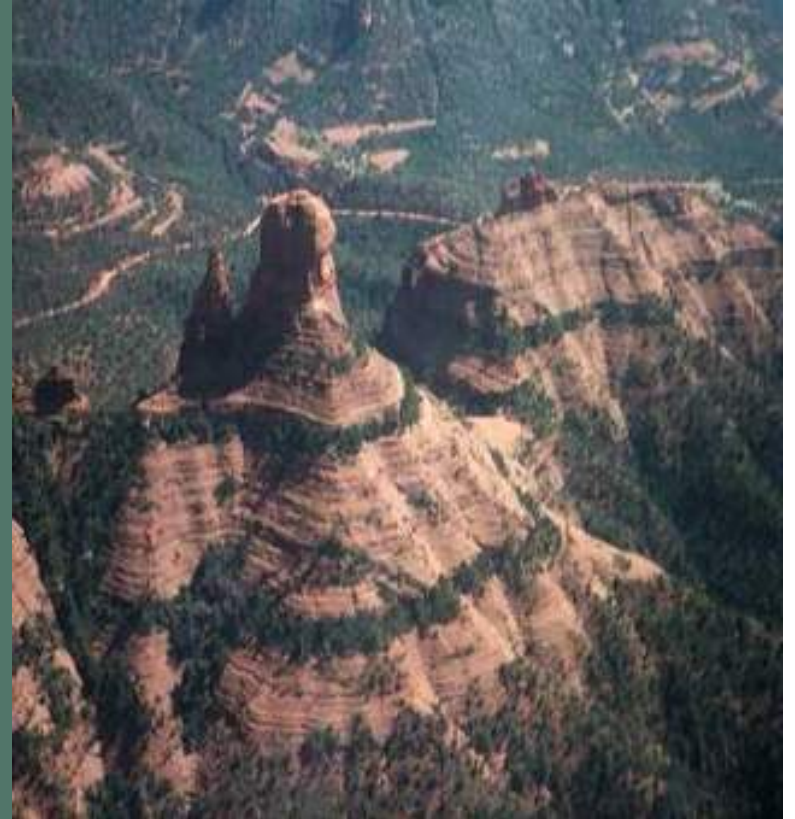
- *National Scenic Byway*
Has 1 or 2 of the 6 Intrinsic Qualities
- *All-American Road*
Has 2 or 3 of the 6 Intrinsic Qualities
Be a “*Destination Unto Itself*”
Has one-of-a-kind features



NATIONAL SCENIC BYWAYS PROGRAM

For National Designation:

- Nomination application – approximately every 3 years
- State designation by the DOT
- Completed Corridor Management Plan



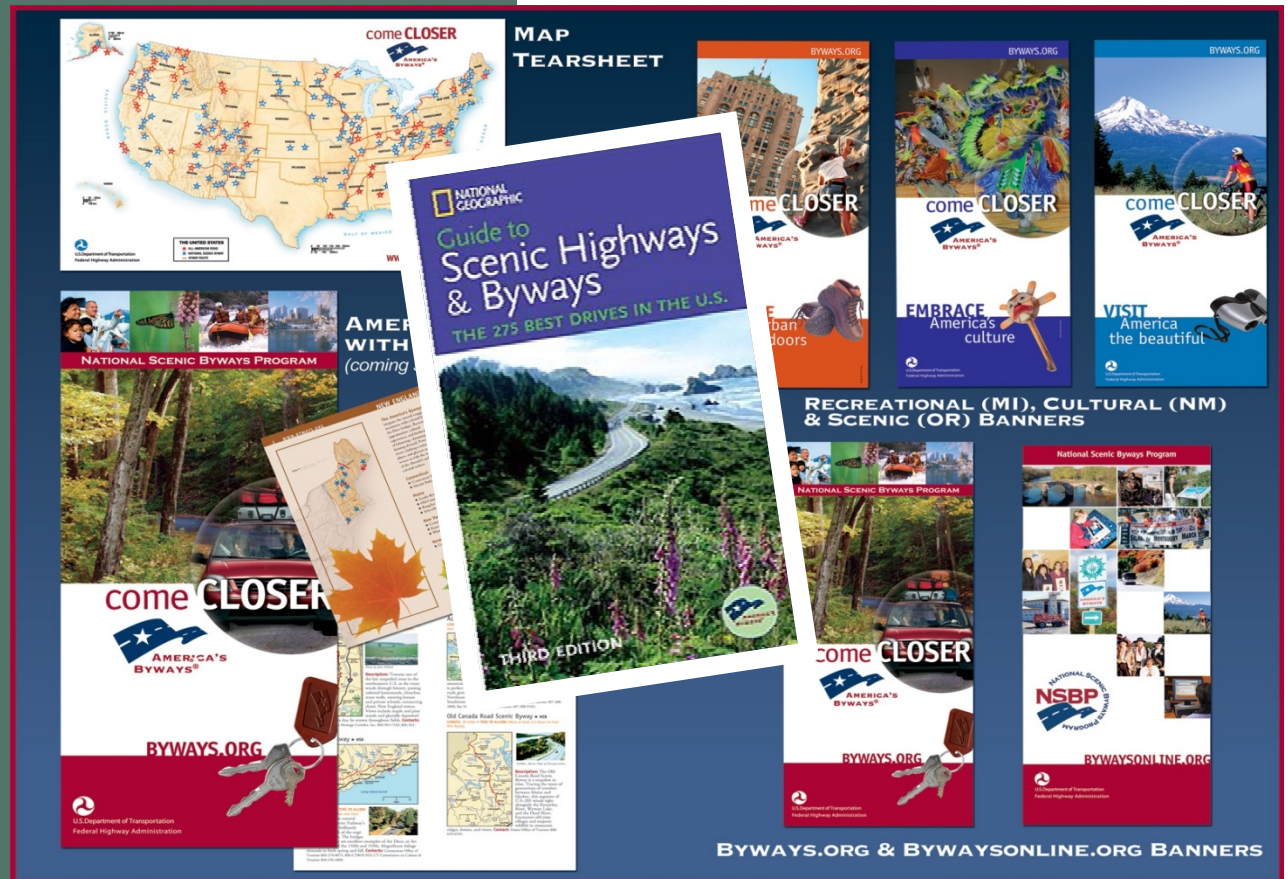
WHAT IS A CORRIDOR MANAGEMENT PLAN?

- A “*grass roots*” level participation project in which local desires and issues are documented to serve as a planning guide for a state-designated scenic or historic road
- Includes a vision, inventory, interpretation, summation



NATIONAL SCENIC BYWAYS BENEFITS

- Economic Development
- Tap into local, State, Federal, Regional, and National Partnerships
- Community Pride & Cooperation
- Eligible for Grant Funding if Available



ARIZONA NATIONALLY-DESIGNATED SCENIC BYWAYS

ALL-AMERICAN ROAD

Red Rock Scenic Road



ARIZONA NATIONALLY-DESIGNATED SCENIC BYWAYS

ALL-AMERICAN ROAD

Historic Route 66



ARIZONA NATIONALLY-DESIGNATED SCENIC BYWAYS

NATIONAL SCENIC BYWAY

Coronado Trail Scenic Road



ARIZONA NATIONALLY-DESIGNATED SCENIC BYWAYS

NATIONAL SCENIC BYWAY

Sky Island Parkway



ARIZONA NATIONALLY-DESIGNATED SCENIC BYWAYS

NATIONAL SCENIC BYWAY

Kaibab Plateau – North Rim Parkway



ADOT SCENIC ROADS WEBSITE

- Contains guidance on local and national designations
- Contains downloads including application components, maps, and completed Corridor Management Plans
- Website:
www.azdot.gov/scenicroads

The screenshot shows the ADOT Scenic Roads website. At the top, there is a navigation menu with links for Home, Motor Vehicles, Programs, Business, Planning, Media, AZMT, Maps, and Contact. Below the menu, there is a search bar and a 'subscribe for updates' button. The main content area is titled 'Scenic Roads' and includes a 'subscribe for updates' button. The page is divided into sections: 'Types of Scenic Roads' (with sub-links for Designating a State Scenic Road, Designating a National Scenic Road, and Designating a Federal Scenic Road), 'Corridor Management Plans', 'Funding Sources', 'List of Scenic Roads', 'Guidance, Maps and Documents', 'Related Resources', and 'Contact Us'. A footer section contains links for MVD Services, Business, Media, and Resources.