

# Agency and Public Outreach

## Strategic program goals include:

- Developing and implementing a process that maintains open and continuing communications.
- Creating an informed public.
- Using multiple communication tools to effectively engage all population segments, ensuring equal access to the EIS process.
- Establishing constructive agency participation opportunities.
- Obtaining public input throughout the study to assist in developing a well planned, researched, and defensible EIS.
- Identifying and considering key issues and concerns.
- Improving the decision-making process.

## Outreach Activities 2001–2013

Public	Agency
<ul style="list-style-type: none"> <li>• Information collected from community and tribal leaders during <b>40</b> interviews</li> </ul>	<ul style="list-style-type: none"> <li>• Scoping letters sent to <b>232</b> federal, state, and local agencies</li> </ul>
<ul style="list-style-type: none"> <li>• <b>200+</b> presentations to neighborhood groups, homeowners associations, chambers of commerce, village planning committees, trade associations, etc.</li> </ul>	<ul style="list-style-type: none"> <li>• <b>2-day</b> agency scoping meeting with <b>95</b> agency representatives</li> </ul>
<ul style="list-style-type: none"> <li>• <b>12</b> public meetings</li> </ul>	<ul style="list-style-type: none"> <li>• <b>70+</b> agency meetings</li> </ul>
<ul style="list-style-type: none"> <li>• Study information provided through:               <ul style="list-style-type: none"> <li>– <b>3</b> study videos, including <b>1</b> visual simulation, newsletters (print and electronic), fact sheets, frequently asked questions, and informational postcards</li> <li>– <b>60+</b> Citizens Advisory Team meetings</li> <li>– Interviews, briefings, news releases, comment forms, Internet survey</li> <li>– Project website, email address, and hotline</li> </ul> </li> </ul>	<ul style="list-style-type: none"> <li>• <b>Monthly</b> stakeholder progress meetings held since July 2001 to discuss:               <ul style="list-style-type: none"> <li>– Alternatives</li> <li>– Conceptual designs</li> <li>– Environmental impacts</li> <li>– Communications and public involvement of the proposed action</li> </ul> </li> </ul>
<ul style="list-style-type: none"> <li>• Public and agency comments summarized after each study phase</li> </ul>	

**Chapter 6, Comments and Coordination, documents the agency and public involvement process up to publication of the Draft EIS.**

**It also identifies comments, concerns, and suggestions collected during communications, interviews, and meetings.**

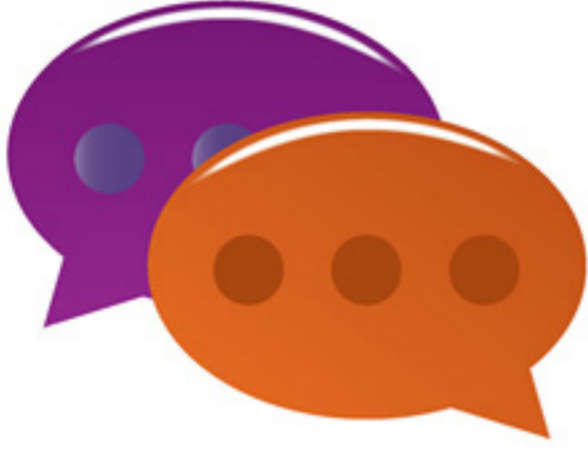
LOOP 202  
*South Mountain*  
 Freeway Study

[azdot.gov/SouthMountainFreeway](http://azdot.gov/SouthMountainFreeway)



# CHAPTER 6

# How Public Comments are Incorporated into the Study



Public comments obtained throughout the study are analyzed to identify:

Issues

Trends

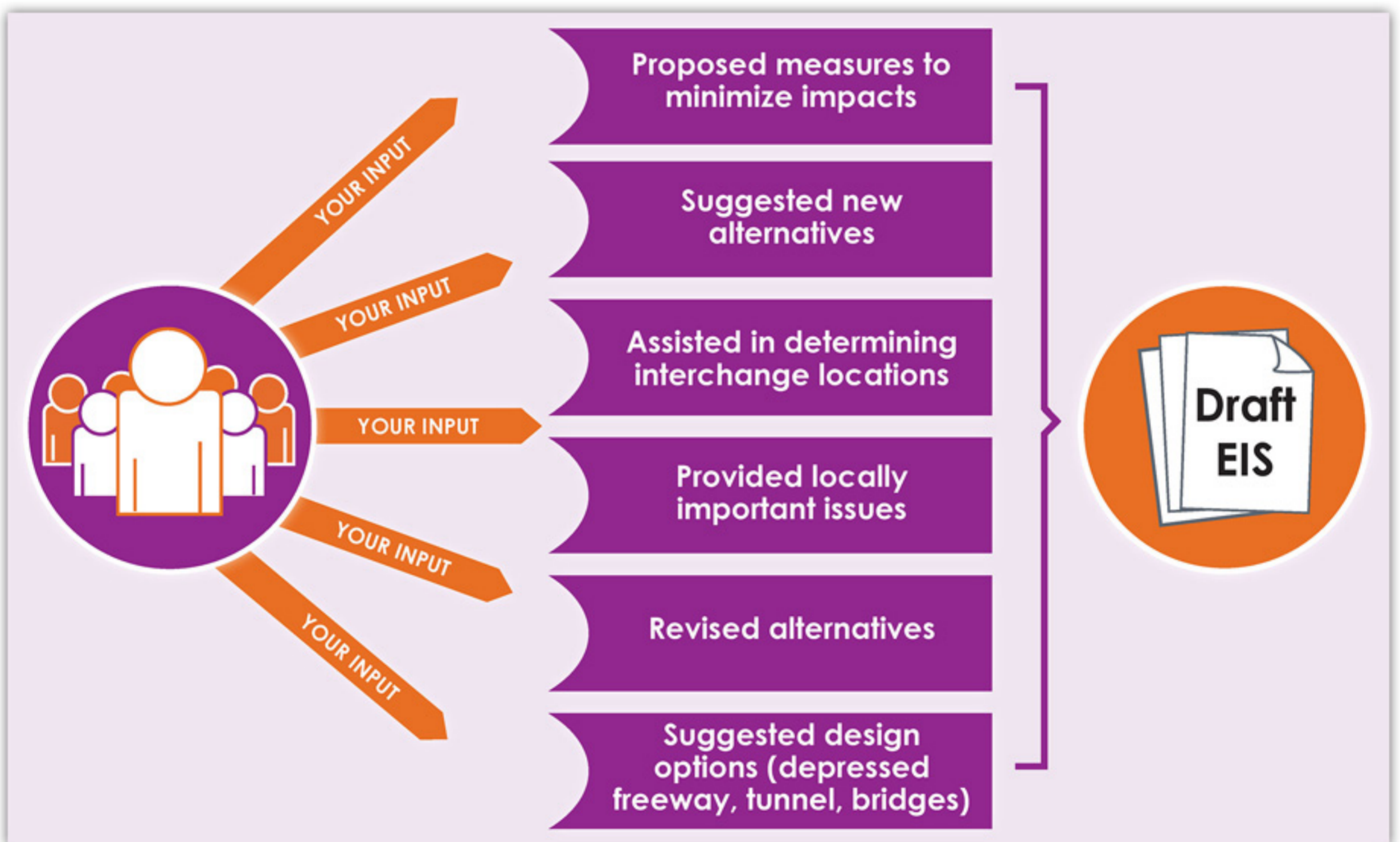
Sentiments

Concerns

Opinions

**These evolved over time as new information became available.**

The public contributed important and timely insights that assisted the study team and enhanced the quality of the Draft EIS.



All public comments received on the Draft EIS during the 90-day comment period will be considered and included in the Final EIS and the project's administrative record.

LOOP 202  
*South Mountain*  
Freeway Study

[azdot.gov/SouthMountainFreeway](http://azdot.gov/SouthMountainFreeway)



## CHAPTER 6

# Public Influence



## How public input has influenced the study:

- Contributed more than **30 alternatives**.
- **Assisted in determining interchange locations**, including shifting the proposed 51st Avenue interchange in Laveen Village and eliminating the proposed 32nd Street interchange in Ahwatukee Foothills Village.
- **Reviewed options along Pecos Road** in Ahwatukee Foothills Village.
- **Proposed measures to minimize impacts** to sensitive resources, including alignment shifts near Tolleson High School in Tolleson and South Mountain Park/Preserve in Laveen Village.
- **Provided input on locally important issues**, including locations of wells in Ahwatukee Foothills Village and potentially historic properties throughout the entire Study Area.
- **Recommended alignment changes to avoid historic and/or cultural neighborhoods and locations**, including alignment shifts near the Sachs-Webster Farmhouse in Laveen Village and the Santa Maria community in Estrella Village.
- **Recommended reducing the proposed freeway's right-of-way needs and minimizing residential displacements** by using an eight-lane design instead of a ten-lane design.
- **Recommended reexamination of potential costs, impacts, and benefits of design options** such as depressed roadways, tunnels, bridges, etc.



LOOP 202  
*South Mountain*  
Freeway Study

[azdot.gov/SouthMountainFreeway](http://azdot.gov/SouthMountainFreeway)



# CHAPTER 6

# Citizens Advisory Team

## Purpose of the South Mountain Citizens Advisory Team

Since the beginning of the study (2001), representative groups and organizations in the Study Area have worked as a voluntary, advisory team to provide advice and input to FHWA and ADOT. The South Mountain Citizens Advisory Team (SMCAT) dedicated time to:

- serve as a conduit of information with neighborhood organizations.
- provide advice on public and agency meetings and on how to clearly present information to the public.
- help define neighborhood and regional issues and concerns.
- provide input into the identification of a Preferred Alternative.
- provide a Build or No-Build recommendation.

## Organizations and entities represented in the SMCAT:

- Ahwatukee Foothills Chamber of Commerce
- Ahwatukee Foothills Village Planning Committee
- Ahwatukee Lakewood Homeowners Association
- Arizona Forward Association
- Arizona Public Health Association
- Arizona Trucking Association\*
- Arlington Estates Homeowners Association
- Calabrea Homeowners Association
- Chandler Chamber of Commerce\*
- City of Avondale
- City of Chandler\*
- City of Tolleson\*
- Gila River Indian Community, District 4\*
- Gila River Indian Community, District 6\*
- Gila River Indian Community, District 7\*
- Gila River Indian Community, Elderly Concerns Group\*
- Cottonfields Homeowners Association
- East Valley Partnership\*
- Estrella Village Planning Committee
- The Foothills Homeowners Association
- Foothills Reserve Homeowners Association
- I-10/Pecos Road Landowners Association
- Kyrene Elementary School District
- Laveen Citizens for Responsible Development
- Laveen Village Planning Committee
- Maricopa County Farm Bureau
- Mountain Park Ranch Homeowners Association
- Phoenix Mountains Preservation Council
- Sierra Club
- Silverado Ranch Homeowners Association\*
- South Mountain Village Planning Committee
- South Mountain/Laveen Chamber of Commerce\*
- Southwest Valley Chamber of Commerce
- United Arizona Dairymen\*

\* previous member organizations



Since 2001, over **60** SMCAT meetings have been held.

LOOP 202

*South Mountain*  
Freeway Study

[azdot.gov/SouthMountainFreeway](http://azdot.gov/SouthMountainFreeway)



# CHAPTER 6

# Draft EIS Public Comment Options

There are several opportunities for the public to provide comments on the Draft EIS. All comment methods are considered equal.

The Draft EIS is available for a 90-day public comment period, which started on **April 26, 2013** and ends on **July 24, 2013**.



Submit a comment form today or postmarked by **July 24, 2013**.



Provide a verbal comment to a court reporter today with no time limit.



Provide a formal 3-minute comment to the study panel (at the hearing only).



Loop 202 South Mountain Freeway Study  
1655 W. Jackson Street, MD 126F  
Phoenix, Arizona, 85007



[projects@azdot.gov](mailto:projects@azdot.gov)



602.712.7006



[azdot.gov/SouthMountainFreeway](http://azdot.gov/SouthMountainFreeway)



**Online Public Hearing** - All of the materials presented at the public hearing, including the study video, banners, and comment form, will be available starting May 21, 2013. Comments will be accepted until July 24, 2013 at [azdot.gov/SouthMountainFreeway](http://azdot.gov/SouthMountainFreeway).



## Community Forums

- Will be held at various locations in the Study Area during the public comment period.
- Technical staff will be at the forums to answer questions. Study materials, including the study video, will also be available to view.
- Court reporters will be available to take individual verbal comments.
- Written comments can also be submitted, but no formal "hearing" format will occur at these community forum meetings.
- Forum locations will be posted at [azdot.gov/SouthMountainFreeway](http://azdot.gov/SouthMountainFreeway), emailed to the e-newsletter subscribers, and published in the newspaper and local publications.

LOOP 202

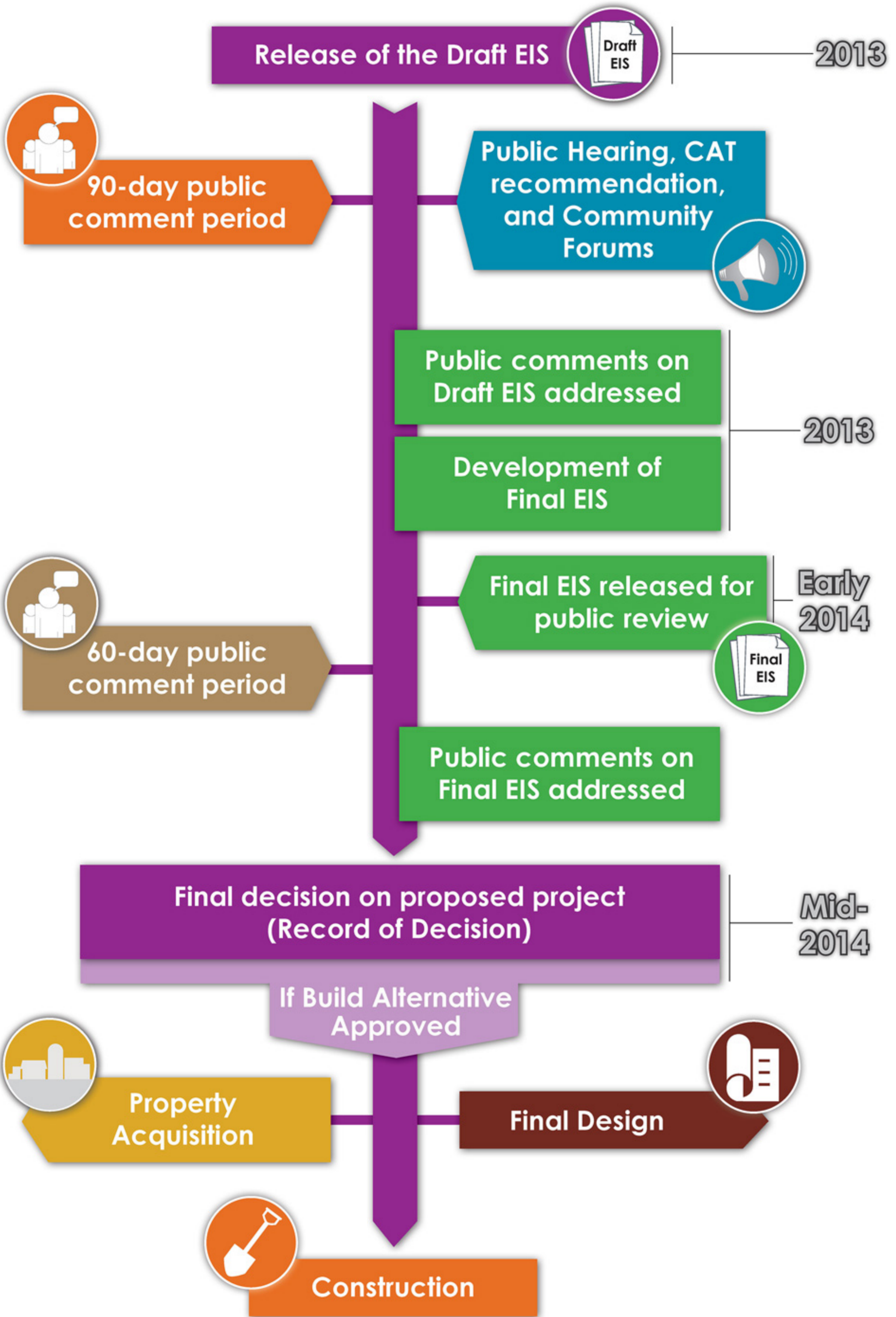
*South Mountain*  
Freeway Study

[azdot.gov/SouthMountainFreeway](http://azdot.gov/SouthMountainFreeway)



# CHAPTER 6

# What are the Next Steps?



LOOP 202  
*South Mountain*  
Freeway Study

[azdot.gov/SouthMountainFreeway](http://azdot.gov/SouthMountainFreeway)



## CHAPTER 6