

ACIS – Arizona Crash Information System

ADOT

Training Video 4

Non-ADOT ACIS Users



ADOT Traffic Safety Group

Created on February 4, 2021



Government Agencies need a Data Access Agreement in place to request access ACIS

Submit email request with below information:

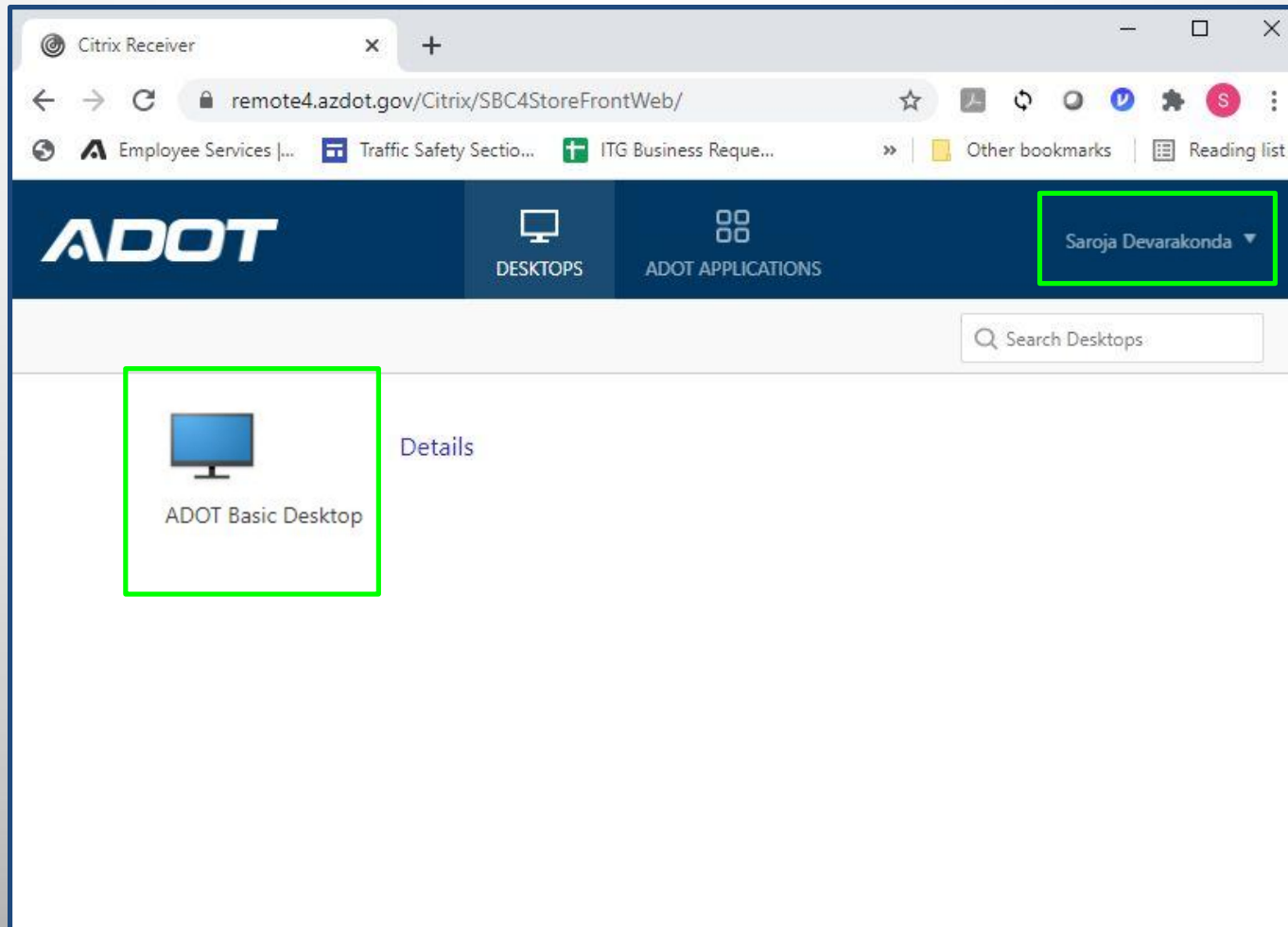
- Agency name and contact info
- Name of Person requesting
- Last 4 digits of SSN
- Project Description and Limits
- signed AUA & NDA forms

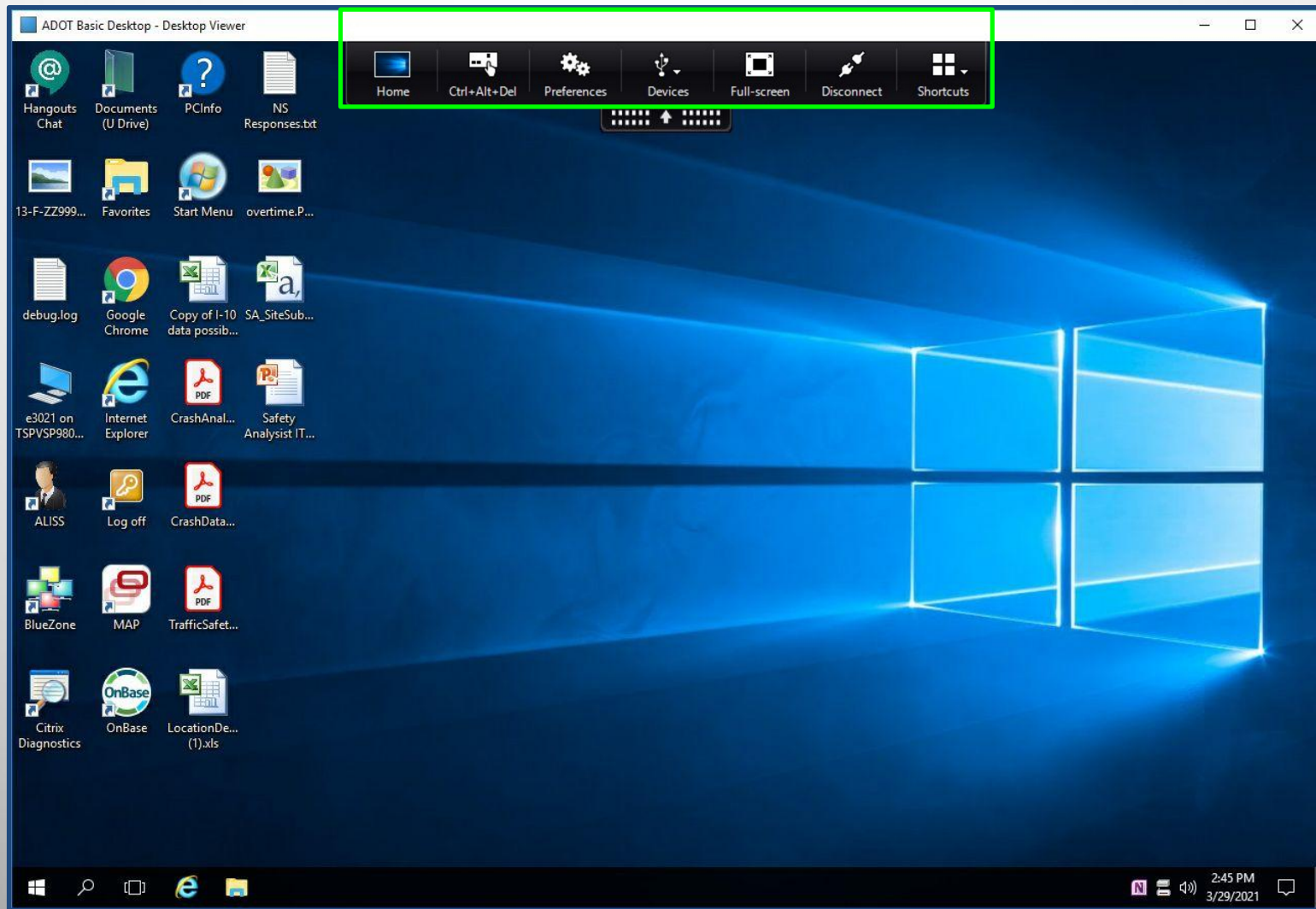
Data Security Requests are approved by [ADOT Traffic Safety Engineer](#) and/or [Traffic Safety Crash Records Manager](#)

Login to ADOT Network using your ADOT RACF ID, Password and Mobile PASS code

The screenshot shows a web browser window with the URL <https://remote4.azdot.gov/vpn/index.html>. The browser's address bar and tabs are visible at the top. The main content area of the page is dark blue and features a login form. The form is titled "Please log on" and contains three input fields labeled "ADOT ID", "Password", and "RSA Token". Below these fields is a checkbox labeled "I accept the [Terms & Conditions](#)". At the bottom of the form is a "Log On" button.

You should see DESKTOP ICON. Click to open ADOT Network.





Open ACIS link in any web browser



ACIS - Saving Files

Sharefile access to NON-ADOT users

- ✓ *ADOT portal does not allow to save on hard drive*
- ✓ *Save to U Drive*
- ✓ *Upload to ADOT Sharefile site*
- ✓ *Outside ADOT portal download from Sharefile site*



Sharefile Login

← → ↻ 🔒 adot.sharefile.com/Authentication/Login

Apps ADOT-Bookmarks Employee Services [...] Arizona Crash Inform... ArcGIS Web Applic... ALISS Web Portal CMF Clearinghouse... Photolog ADOA Wellness Pro...

Administrator Only Login

ShareFile is a safe, secure method for sharing files. To access, use your Active Directory credentials. If you don't have access, please contact ADOTServiceDesk@azdot.gov. By using ShareFile, you are agreeing to follow the company's Information Classification and Handling guidelines.

Sign In

Customer Login

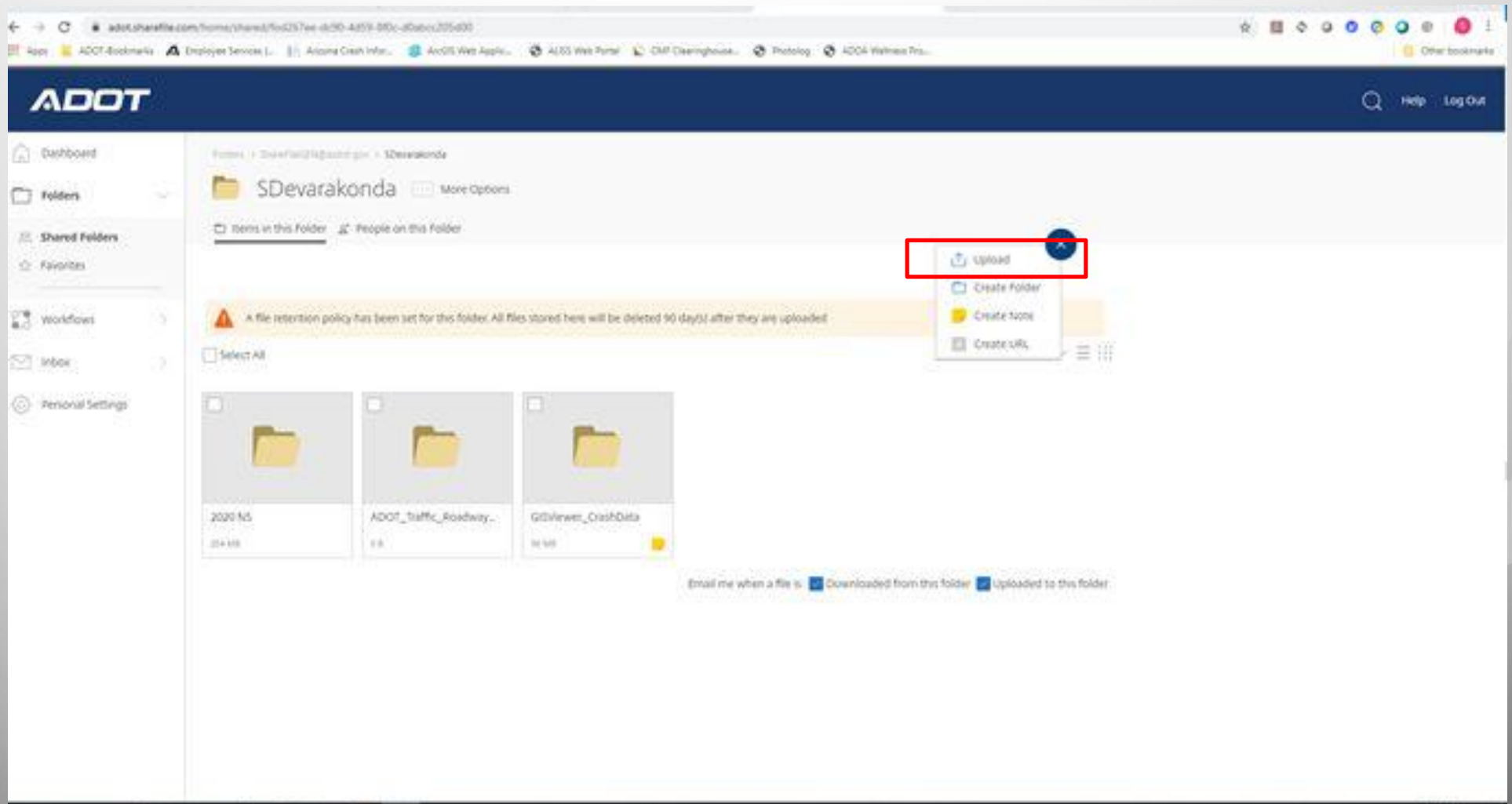
sdevarakonda@azdot.gov

.....

Sign In


Remember Me [Forgot Password?](#)

Sharefile Upload



Sharefile Upload

Upload to "SDevarakonda"



Drag files here

[Browse files](#)

Sharefile Download

ADOT

Dashboard
 Folders
 Shared Folders
 Favorites
 Workflows
 Inbox
 Personal Settings

Folders > ShareFileGEN@azdot.gov > SDevarakonda

SDevarakonda More Options

Items in this Folder People on this Folder

Download Share Delete Preview More

A file retention policy has been set for this folder. All files stored here will be deleted 90 day(s) after they are uploaded

Select All Sort By Name

<input checked="" type="checkbox"/>	<input type="checkbox"/>	<input type="checkbox"/>	<input type="checkbox"/>
ShareFile_Basic Client G...	2020 NS	ADOT_Traffic_Roadway...	GISViewer_CrashData
270 KB	254 MB	0 B	96 MB

Email me when a file is: Downloaded from this folder Uploaded to this folder

ACIS Query did not **WORK**

- ✓ *Check your query parameters*
- ✓ *Check if you have access to the NCIC codes*
- ✓ *Check all programs are working*
- ✓ *Call ADOT Traffic Safety*



ACIS access will be disabled if you didn't login to ADOT network for 90 days

Crash Numbers Don't Match - ACIS

- ✓ *An agency may not have sent all their crash reports to ADOT or the reports have not been processed due to backlog*
- ✓ *Agencies may have different criteria for crashes, such as counting private property crashes or under minimum crashes, or including fatalities not matching NHTSA guidelines*
- ✓ *An agency may have different criteria for certain queries, example: counting all crashes within 250 feet of an intersection instead of 150 feet or using the intersection related box*
- ✓ *Any query run from 2 different databases may have different results*

ACIS – Access and Support Contact

ACIS Access : ADOT Traffic Safety Engineer

ACIS Support : ADOT Service Desk 602-712 7249